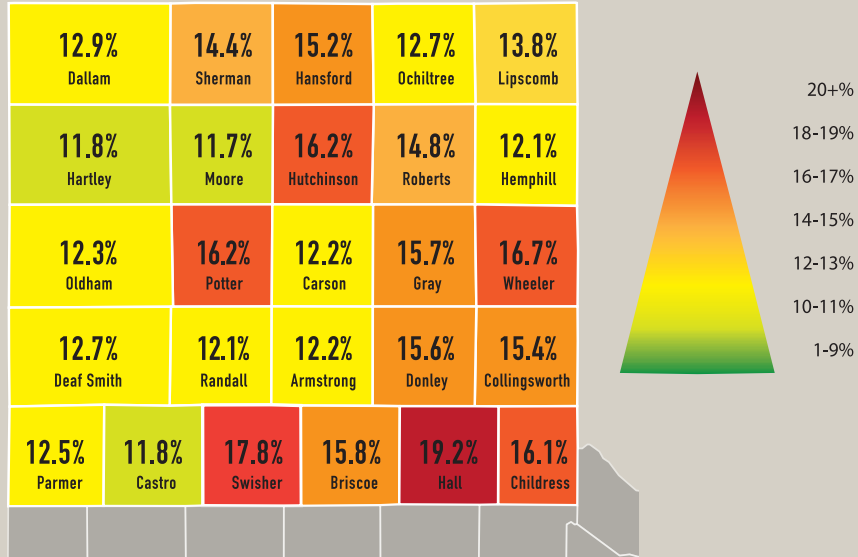
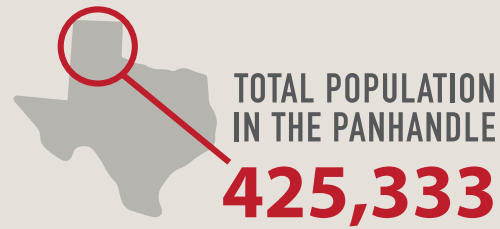


PERCENT OF THE POPULATION EXPERIENCING FOOD INSECURITY

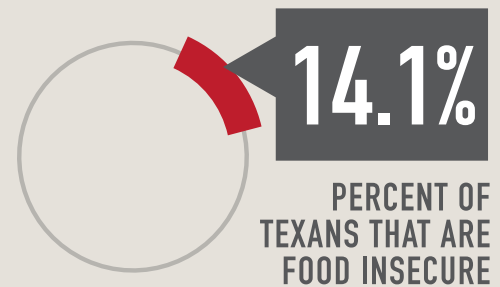


WHAT IS FOOD INSECURITY AND WHAT DOES IT LOOK LIKE IN THE PANHANDLE?

Food insecurity refers to USDA's measure of lack of access, at times, to enough food for an active, healthy life for all household members and limited or uncertain availability of nutritionally adequate foods. Food-insecure households are not necessarily food insecure all the time. Food insecurity may reflect a household's need to make trade-offs between important basic needs, such as housing or medical bills, and purchasing nutritionally adequate foods.



POPULATION OF SENIORS



ESTIMATED NUMBER OF FOOD INSECURE SENIORS IN THE TEXAS PANHANDLE

9,108

ESTIMATED NUMBER OF FOOD INSECURE OLDER ADULTS BY COUNTY

109 Dallam	220 Sherman	118 Hansford	145 Ochiltree	77 Lipscomb	
98 Hartley	279 Moore	568 Hutchinson	27 Roberts	63 Hemphill	
32 Oldham	2,436 Potter	148 Carson	532 Gray	163 Wheeler	
305 Deaf Smith	2,715 Randall	56 Armstrong	125 Donley	77 Collingsworth	
174 Parmer	143 Castro	220 Swisher	109 Briscoe	131 Hall	109 Childress



July 2022

Graphics created using information from:
<https://map.feedingamerica.org/county/2019/overall/texas>
<https://www.census.gov/quickfacts/fact/table/TX,US/PST045221>